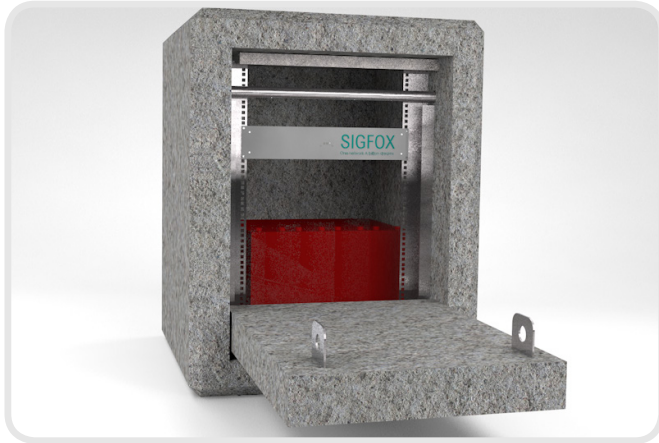


Concrete Equipment Enclosure | A-CEE-0003

MAGICUBE-MINI

CONCRETE EQUIPMENT ENCLOSURE



Product Overview

* Batteries and equipment not included

- **Highly secure - vandal resistant**
- **Rapid remote deployment**
- **Low cost - Higher ROI**
- **Reduced overall site CAPEX / OPEX**
- **Passive temperature management**
- **Ideal for adding battery capacity to existing sites**
- **Suitable as equipment enclosure for smaller valuable components such as file servers, WiFi equipment and the like. Whether inside existing shelters or other locations which are not adequately protected.**

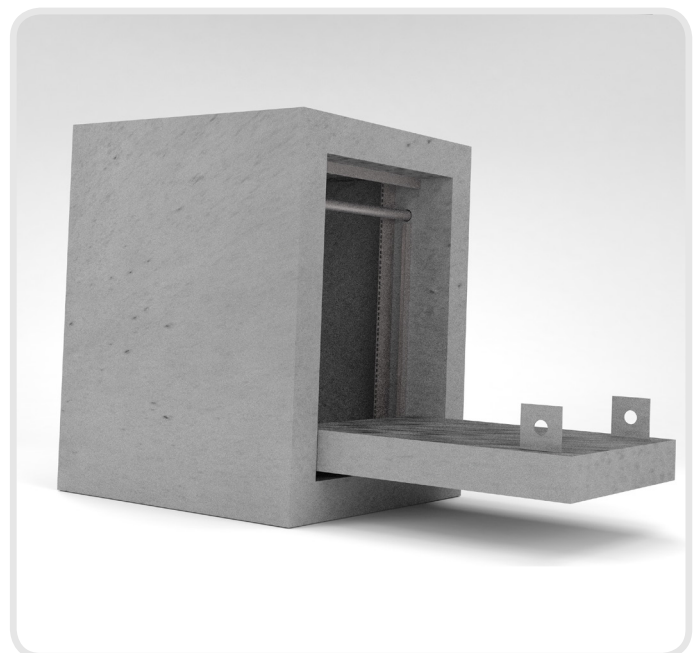
The smaller low cost Poynting Mini-Enclosure is rapidly deployable, suited for remote sites that are difficult to access and ideal for smaller applications and configurations of equipment and infrastructure. The Mini-Enclosure protects high risk critical infra-structure against theft and damage in remote, exposed and vulnerable locations. Features highly robust re-enforced pre-cast concrete, quick and easy deployment, innovative patented access and interlocking system (sold separately) and a well-managed passive temperature control methodology. Ideal for infrastructure providers such as mobile operators, fibre and electricity providers who need to protect batteries, electrical sub-assemblies and IT equipment. The Mini-Enclosure has been successfully deployed in the harsh extremes of sub-Saharan Africa. Protecting base station sites for mobile operators, the cube removes the need for expensive battery cooling (CAPEX) thereby reducing power consumption (OPEX). The current cost of repair, replacement and restoration of critically damaged infrastructure together with loss of associated revenue generating services justifies the highest Return On Investment (ROI) for the Mini-Enclosure.

Features

- Patented interlocking system
- Portable opening kit for ease of maintenance and added level of security
- Vandal resistant 100mm double reinforced precast concrete
- No external opening mechanism with patented closures system enhances security
- Special heat resistant exterior paint ensures optimum battery life

Application

- MNO's
- WiSPs
- Municipal – Utilities
- Due to lower size/weight it can be used in in-building sites inside equipment rooms or other locations prone to theft or unwanted access
- Ideal for adding battery capacity to existing sites
- Quite suitable as equipment enclosure for smaller valuable components such as file servers, WiFi equipment and the like whether inside existing shelters or other locations which are not adequately protected.



MagiCube-Mini

©2015 Poynting Antennas (Pty) Ltd. All rights reserved.
Product Specifications may change without prior notice
Revised: February 2017

Regulatory Compliance: RoHS 2011/65/EU Compliant | ISO 9001:2008
Document version: A-CEE-0003_V1.0
www.poynting.tech

Battery Cube and Equipment Capacity

Capacity to house 8 telco 200Ahr 12V batteries

20 U* 19 inch Racking

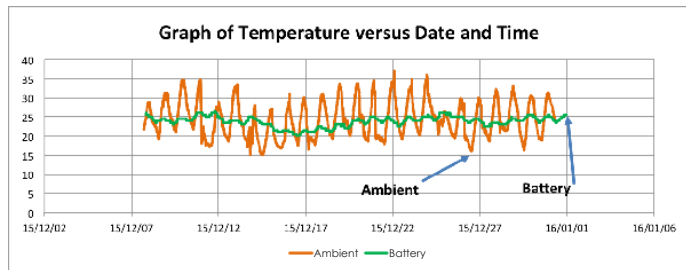
Environmental Specifications

Environmental Conditions: Outdoor any climatic conditions
Rain(optional drain holes and seals): Any equipment stored on shelving with 50mm height will remain dry under the heaviest rain conditions.

Ordering Information

Commercial name: MagicCube-Mini
Order Product Code: A-CEE-0003
EAN number: N/A

Battery Temperature in Hot Johannesburg Summer Month



Month Summary

Max Ambient 37.5°C
Ambient Avg 23.9°C
Battery Avg 24.0°C

Explanation:

Battery average temperature will be equal to AVERAGE Ambient temperature of the site. Average temperature for any location should take into account an annual cycle (winter and summer) and both day and night temperatures.

Mechanical Specifications

Product Dimensions (L x W x D): 800mm x 800mm x 1000mm

Product Dimensions (inside cube): 600mm x 600mm x 800mm

Weight: +/-600 kg

Lid Weight: +/-200 kg

Opening: Externally no apparent opening mechanism. Opening possible with HSO approved service kit

Wall Thickness: 100mm

Materials: 40-50MPa precast concrete

Double 100 x 100 x 6mm

Mesh reinforcing

HVAC : Standard with Free flow ambient air cooling.

Exterior: Coated with heat resistant white paint.

Locking options: Different padlock systems can be supported. Abloy system standard. Optional electric/remote opening can be supplied.

Alarm Option: Access, battery temperature, bus voltage, battery bank midpoint voltage monitoring

Specification: Meets stringent health and safety requirements with certification

Cable interface (Hole dimensions): 2 x 50mm diameter ducts provided.

Venting: "4 12mm top mounted vents slanting outwards at 15 degrees"

Ground preparation: Compacted ground, slab or firm pebble surface.

Optional Extra: Ground anchors for extra security
Circulating fan
Gland Plates

Site installation: Pure drop down of cube. On site provision of ducting/cabling and installation of batteries.

Contact Poynting

Poynting Antennas (Pty) Ltd - Head Office

Unit 4, N1 Industrial Park
Landmarks Avenue,
Samrand, 0157
South Africa

Phone: +27 (0) 12 657 0050

E-mail: sales@poynting.co.za

Poynting Europe

Regus Business Center Neue Messe Riem
Kronstadter Straße 4
81677 München
Germany

Phone: +49 89 208026538

E-mail: sales-europe@poynting.tech